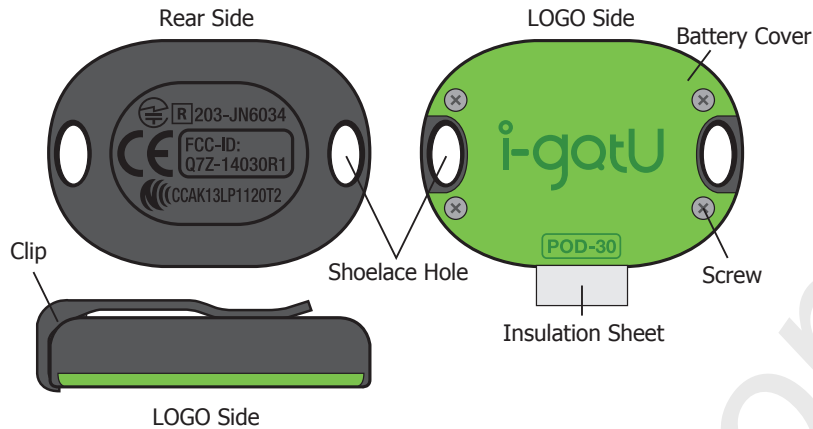
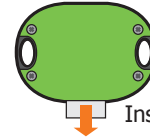


Device Overview



Important Notice

The device comes with a battery pre-inserted. Before using the device, the insulation sheet must be removed in order to use the device.

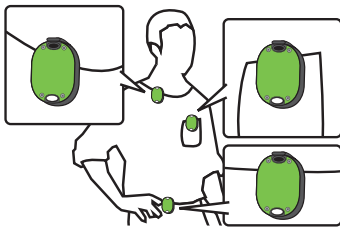


Insulation Sheet

Please remove the insulation sheet as shown in the image illustrated. (Improper removal of the insulation sheet might end up breaking the insulation sheet.) Once the battery fails to activate, you will need to open the battery cover, and remove scraps of the broken sheet.

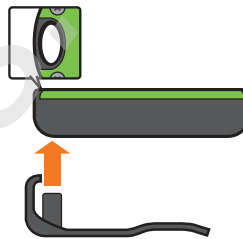
Installation

1a Use clip



This device can be clipped onto shirt pocket, collar or around waist. Please make sure the device is securely snapped into the clip before use.

Install & Uninstall Clip

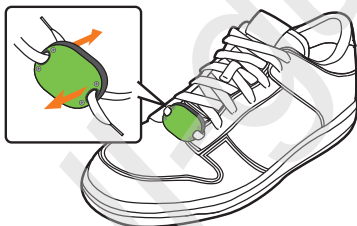


To install the clip, slide the clip forward along the back of the sensor until the sensor is securely snapped into the clip latch.



To detach the clip from the sensor, pull up the clip latch in order to eject the sensor.

1b Install the sensor on top of Sneakers



When the device is tightened on the shoelace, make sure the LOGO side faces up, while the shoelace should be pulled through the two shoelace holes aside the device and tied with a knot to fasten the device.



LOGO side facing down



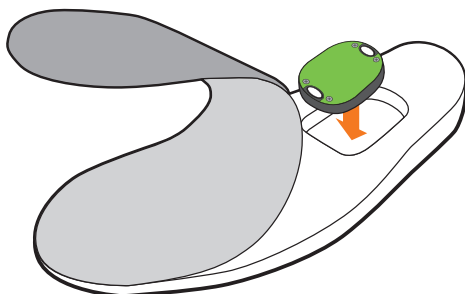
Excessive tilting

Important Notice

While tying the shoelace, pull one through from upward while the other from downward, and make sure the LOGO side faces up.

Please try to keep the device at horizontal level, for excessive tilting might cause incorrect detection.

1c Install Device into the Slot of the Sneaker



This device can also be installed in shoes that come with insertion slot for this sensor, such as Nike or Adidas shoes with special feature marks.



(Lift up sock liner and insert this sensor into the slot with LOGO facing up)

## 2 Download and Install i-gotU Sports

QR code for  
Android phones



<https://market.android.com/details?id=com.mobileaction.isports>  
For Android phone users, please download i-gotU Sports from Google Play.


QR code for iOS  
phones




<http://appstore.com/mobileactiontechnologyinc/igotusports>  
For iOS phone users, please download i-gotU Sports from App Store.

### Getting Started : To get started with i-gotU Sports, please complete the following settings:

#### Step 1. Set up personal profile

1. Open i-gotU Sports app on your phone, and tap on **Home**  at the upper left corner.
2. Select **[Settings]**, and fill in your personal information under **[Profile]** section, including Name, Gender, Height, Weight and Age.

#### Step 2. Scan for device and complete device calibration

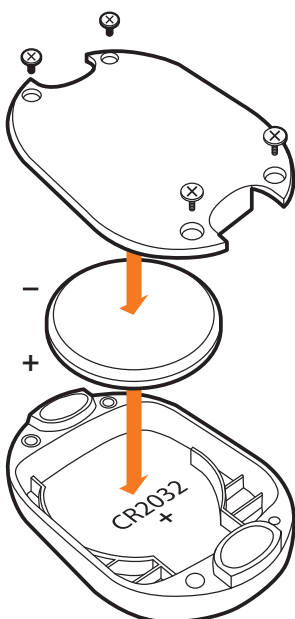
1. Open i-gotU Sports app on your phone, and tap on **Home**  at the upper left corner.
2. Select **[Sensor]**, and the app will start device search. Once your device is found, tap on **the name of BLE Footpod** shown in the section of Detected sensor(s) to get connected, and tap on **[Calibration]** afterwards to proceed with device calibration. (To start with calibration, you'll be guided via a wizard. Follow what's stated on the screen to complete the procedures.)

3. Properly install your device by either placing it in the shoe or on the shoe as illustrated on the screen. Please stand still while placing the device, then tap on **[Next]** to continue.
4. Stand on your tiptoe as illustrated. Tap on **[Next]** to continue.
5. Calibration is now complete, and i-gotU Sports has detected the position of your device as illustrated on the screen.
6. You may now start using i-gotU Sports with the device installed.

#### Important Notice:

In order to ensure the accuracy of detection, the device must be calibrated every time it is installed.

### Battery Change



- Use a screw driver to loosen the screws on the battery cover. Please have the screws kept somewhere.
- Remove the battery cover.
- Insert an CR2032 coin battery.
- Close it with the battery cover.

#### Important Notice

1. Please insert the battery with the positive electrode facing down.
2. Please make sure the screws on the battery cover are securely fastened, in case of any water penetration.

#### Supported Devices:

Any Android (v4.3 and up suggested) mobile phone with built-in 4.0 Bluetooth or iOS device, such as iPhone 4S/5/5S/5C, iPad mini/4 or iPod Touch 5.

The updated list of mobile phones compatible with this sensor is posted in the following website:

<http://ww2.voiis.com/jpod/devices.html>



#### Notes:

1. Although the device is useable in the rain, it is prohibited to be used under water.
2. Please do not use any corrosive chemical to clean the device.
3. Bluetooth is disabled by default. Bluetooth will be activated automatically upon detection of any sensor movement.