



Quick Start Guide

Ceiling Condenser Microphone

Overview

The Sense™ Supercardioid Condenser Hanging Microphones are condenser microphones designed specifically for conference rooms, training rooms, and houses of worship. By suspending and angling the mic over the desired sound pickup area, the high sensitivity and wide, dynamic frequency response from your Sense™ microphone will reproduce high-quality sound for all recording purposes.

Features

- High sensitivity for quality sound pick-up in difficult situations
- 25' cord detachable XLR cable & connectors
- Foam windscreen provided for “pop” shielding
- Hypercardioid pickup pattern
- RF filtering to prevent wireless interference

Mounting Plate Installation

1. Pass the microphone through the hole in the mounting plate (Figure 1).
2. Adhere the label to the reverse side of the mounting plate, covering the hole. Slide the microphone wire through the slot in the label, then press the label firmly onto the plate (Figure 2).
3. Pull the desired amount of microphone wire through the mounting plate, then thread the wire through either of the grooves on the edge of the mounting plate (Figure 3).
4. Use the 4 included screws to secure the mounting plate to the ceiling (Figure 4).

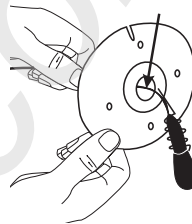


Figure 1

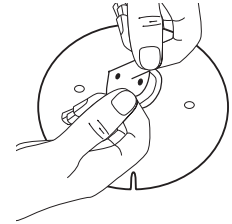


Figure 2

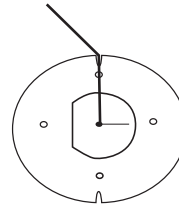


Figure 3

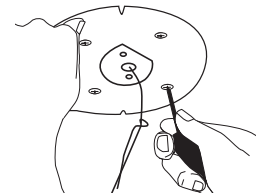


Figure 4

Installation Tips & Guidelines

- Use the microphone's 120° pickup angle to capture the desired area by positioning it in front of the closest sound source, above the most rear source, and aimed between them (Figure 5).
- If using more than 2 mics in the same environment, keep the second mic 9.8' away from the first, or 3 times the distance from the closest performer to the microphone (Figure 6).
- Wind the wire around the flexible hanger to hold the microphone in the desired direction (Figure 7).
- Slip the windscreen over the head of the mic to prevent any popping noises from breath or air (Figure 8).

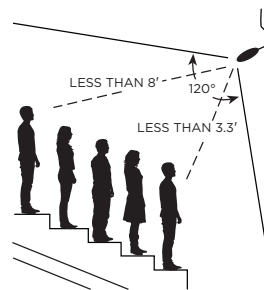


Figure 5

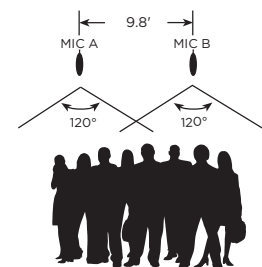


Figure 6



Figure 7



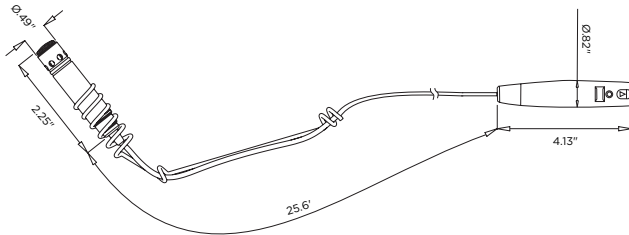
Figure 8

Other Best Practices:

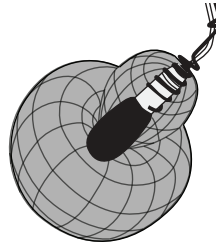
- The microphone should not be left in the open sun or areas where temperatures exceed 110° F (43° C) for extended durations of time.
- Avoid installing where extremely high humidity may be an issue.

Technical Information

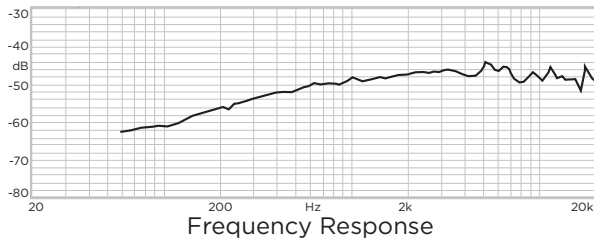
Measurements



Polar Pattern



Frequency Response



Specifications

SE-300-CM-W	
Capsule Type	Condenser
Polar Pattern	Supercardioid
Max. SPL for 1% THD	125 dB
Frequency Response	100 ~ 18,000 Hz.
Sensitivity (at 1,000 Hz.)	-48 dB (4mV)
Impedance	220Ω ±30%
Output Connector	3pin XLR (M) Type
Phantom Power Requirement	12-52V DC

Warranty



1-Year Limited Warranty

This Sense™ Product has a One-Year Limited Warranty. This warranty includes parts and labor repairs on all components found to be defective in material or workmanship under normal conditions of use. This warranty shall not apply to products that have been abused, modified, or disassembled. Products to be repaired under this warranty must be returned to SnapAV or a designated service center with prior notification and an assigned return authorization number (RA).

